



APPLICATION:

## Plastic pipes Through Slab

ID:

**CP638:  
MP-RF-M-01**

**INFORMATION:**

- Not to scale
- All units are in millimetres
- Tested according to EN 1366-3
- Classification Report 23003B

**CP 638 Mortar + CFS-C EL**

REV:

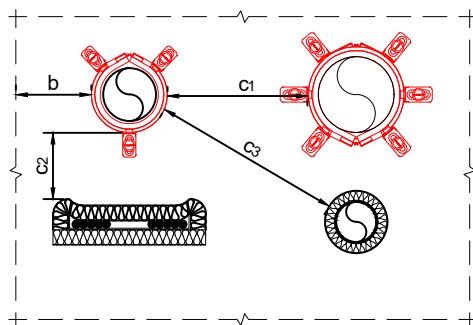
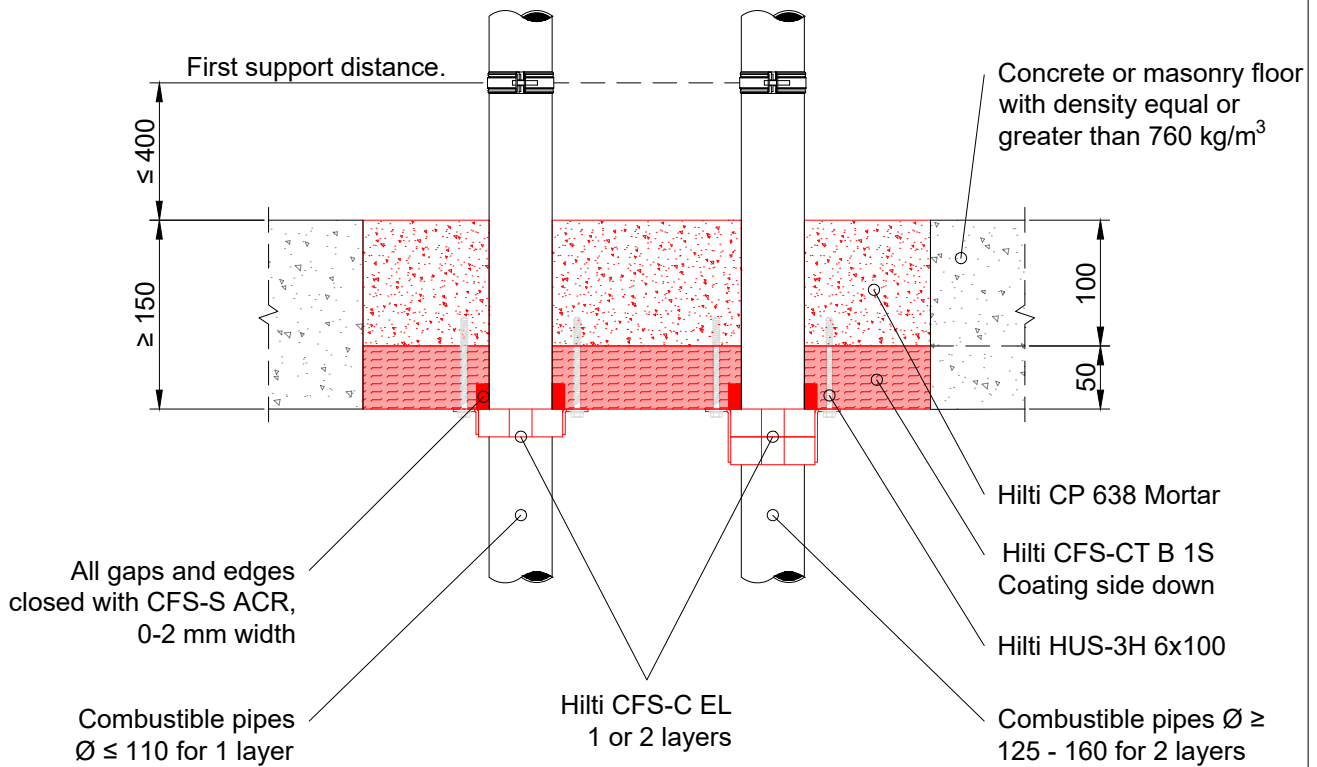
DATE:

**01**

**11/2024**

**Fire Rating EI 120**

**Page 1/1**



Spacing overview for mixed seals		
Description	Shortcut	Distance
To seal edge	b	$\geq 50$ mm
To other pipes with CFS-C EL	c <sub>1</sub>	$\geq 38$ mm
To cables with CFS-IS	c <sub>2</sub>	$\geq 38$ mm
To any other services	c <sub>3</sub>	$\geq 100$ mm

PE pipes in acc. EN 1519-1, EN 12201-1, EN 15494, EN 12666-1, PE-X pipes in acc. EN 15875-2, ABS pipes in acc. EN 1455-1 and EN 15493, as well as SAN+PVC in acc. ISO 19220.

Number of layers	Hooks	Diameter	Wall thickness	Fire rating in mixed opening
1	3	$\leq 75$ to 90 to 110 mm	3 to 3.7 to 4.2	EI 120-U/U
2	4	$\geq 125$ to 160 mm	4.9 to 6.2 to 9.5	EI 120-U/U

PVC pipes in acc. EN 1329-1, EN 1453-1, EN 15493, EN 1452-2.

Number of layers	Hooks	Diameter	Wall thickness	Fire rating in mixed opening
1	3	$\leq 40$ to 110 mm	1.9 to 2.7 to 6.6	EI 120-U/U
2	4	$\leq 160$ mm	6.2 to 9.5	EI 120-U/U

Maximum opening size without additional support:  
2000 x 1800 mm or reduced width, with up-to 10m length.  
See classification report for further details.

- The application limits on this detail are for guidance purposes only. For more detailed information based on the full range of available test results please contact the Hilti Technical Advisory Service.
- The product and application has been assessed as a minimum to the BS 476 standard. It may have additional European and worldwide testing. Please contact Hilti for further information.
- All installations should be carried out in accordance with Hilti's installation instructions and by competent & experienced installers using Hilti branded products.
- All services are to be correctly and adequately supported to prevent collapse and distortion.

Hilti (Gt. Britain) Limited | No 1, Circle Square | 3 Symphony Park | Manchester | M1 7FS

Freephone: 0800 886 100 | Website: www.hilti.co.uk

**LEGAL NOTICE:** This template contains Hilti Intellectual Property which is legally protected, including Community registration of Hilti trademarks. For use only by Hilti customers and in conjunction with Hilti products. No third party use/products is authorised and breaches Hilti's intellectual property rights. Hilti accepts no responsibility for unauthorized use and reserves all rights to take legal action to enforce its rights in law.